

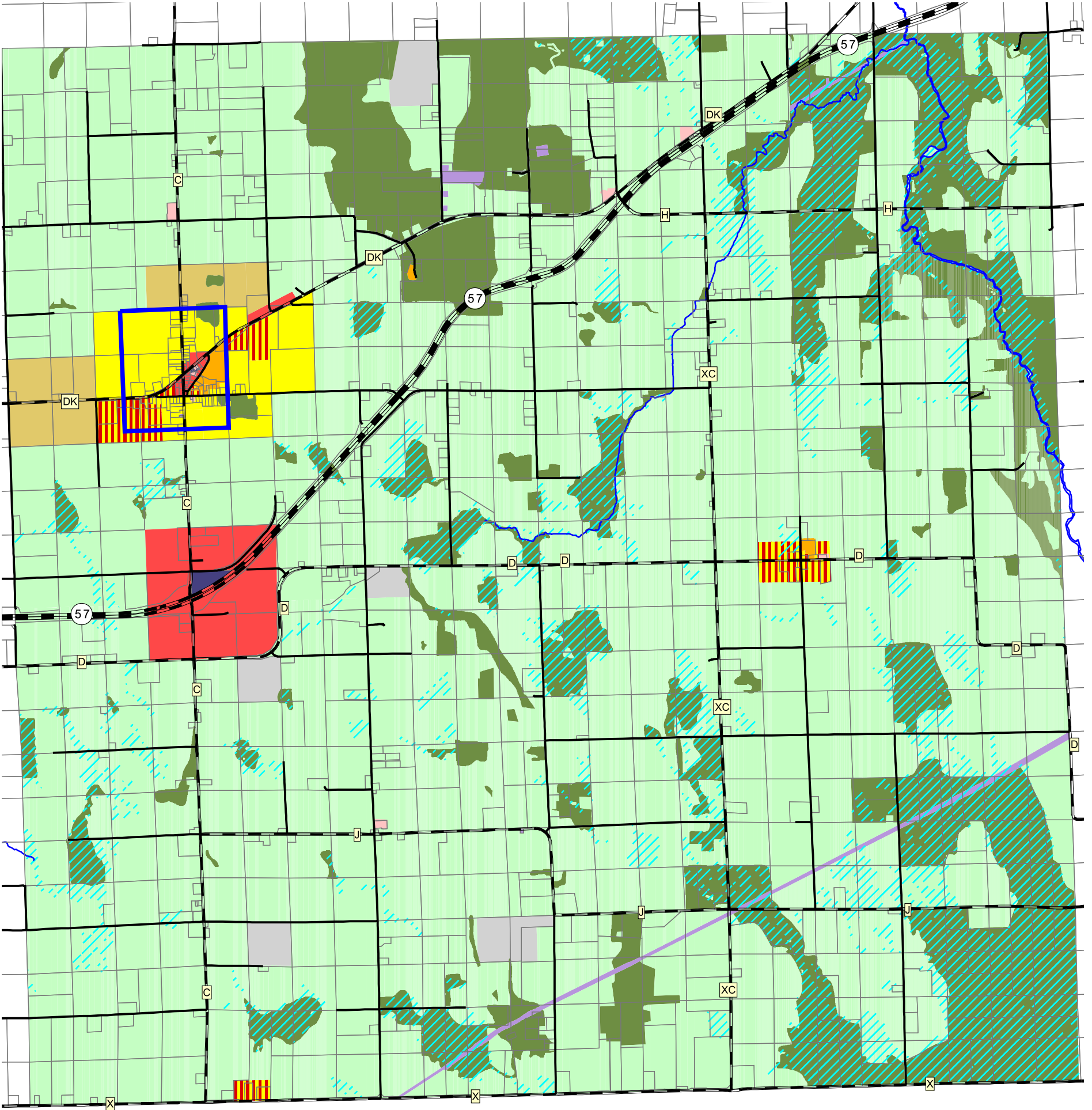


Door County Planning Dept.
421 Nebraska Street
Sturgeon Bay, WI 54235
(920) 746-2323
map.co.door.wi.us/planning

Door County Comprehensive and Farmland Preservation Plan 2035

Town of Brussels Future Land Use

Adopted by the Door County Board of Supervisors, December 16, 2014
Effective upon distribution per Wisconsin State Statutes, January 1, 2015



Future Land Use Categories	
Residential	Communications/Utilities
Rural Residential	Governmental/Institutional
Mixed Commercial/Residential	Parks and Recreation
Commercial	Rural/Agricultural
Industrial	Woodland/Wetland/Natural
Transportation	Core Area
Sewer Service Area	
Water Bodies	Road Class
Major Wetland Areas	State Highway
Streams	County Highway
	Local Road

