



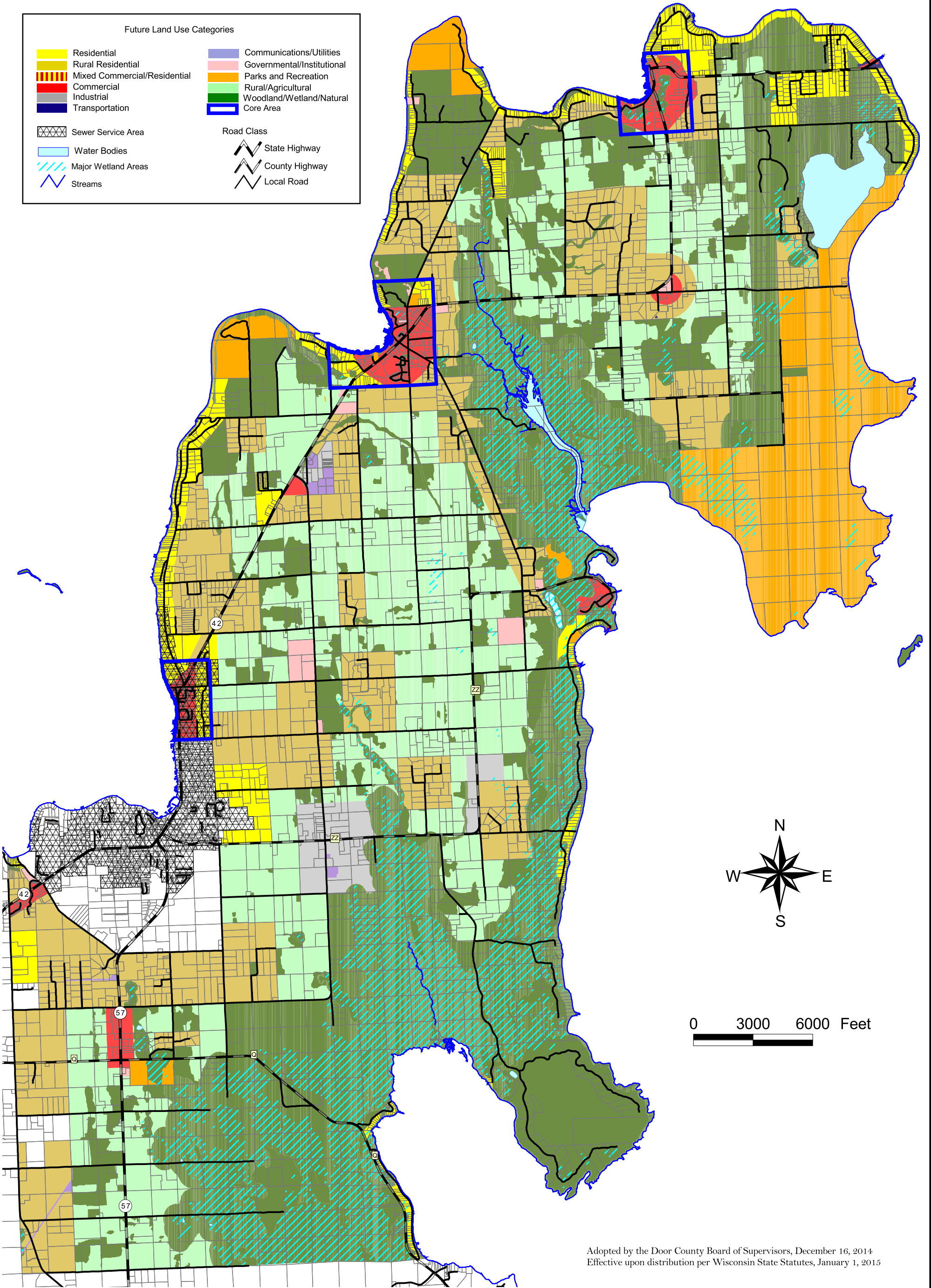
Door County Planning Dept.  
421 Nebraska Street  
Sturgeon Bay, WI 54235  
(920) 746-2323  
map.co.door.wi.us/planning

# Door County Comprehensive and Farmland Preservation Plan 2035

## Town of Liberty Grove Future Land Use

### Future Land Use Categories

- |                              |                                    |
|------------------------------|------------------------------------|
| Residential                  | Communications/Utilities           |
| Rural Residential            | Governmental/Institutional         |
| Mixed Commercial/Residential | Parks and Recreation               |
| Commercial                   | Rural/Agricultural                 |
| Industrial                   | Woodland/Wetland/Natural Core Area |
| Transportation               | Core Area                          |
- 
- |                     |                   |
|---------------------|-------------------|
| Sewer Service Area  | <b>Road Class</b> |
| Water Bodies        | State Highway     |
| Major Wetland Areas | County Highway    |
| Streams             | Local Road        |



Adopted by the Door County Board of Supervisors, December 16, 2014  
Effective upon distribution per Wisconsin State Statutes, January 1, 2015