



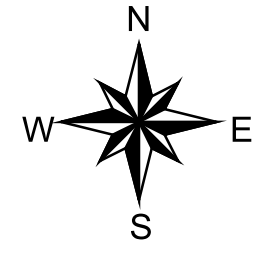
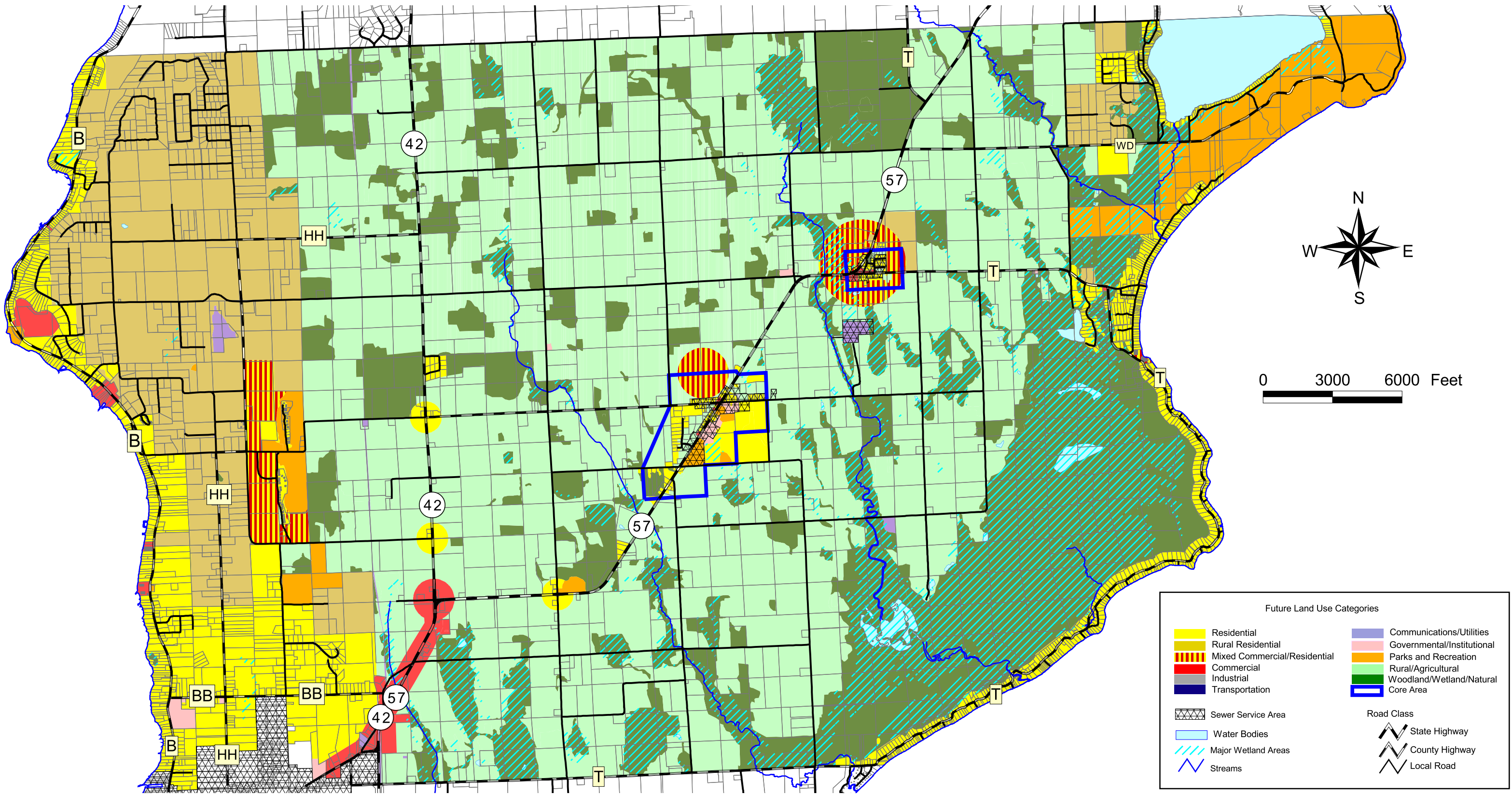
DOOR COUNTY

Door County Planning Dept.
421 Nebraska Street
Sturgeon Bay, WI 54235
(920) 746-2323
map.co.door.wi.us/planning

Door County Comprehensive and Farmland Preservation Plan 2035

Town of Sevastopol Future Land Use

Adopted by the Door County Board of Supervisors, December 16, 2014
Effective upon distribution per Wisconsin State Statutes, January 1, 2015



0 3000 6000 Feet

Future Land Use Categories

Residential	Communications/Utilities
Rural Residential	Governmental/Institutional
Mixed Commercial/Residential	Parks and Recreation
Commercial	Rural/Agricultural
Transportation	Woodland/Wetland/Natural
Sewer Service Area	Core Area
Water Bodies	
Major Wetland Areas	
Streams	

Road Class

State Highway
County Highway
Local Road