



DOOR COUNTY

Door County Planning Dept.
421 Nebraska Street
Sturgeon Bay, WI 54235
(920) 746-2323
map.co.door.wi.us/planning

Door County Comprehensive and Farmland Preservation Plan 2035

Map 9.1(A): Future Land Use Southern Municipalities

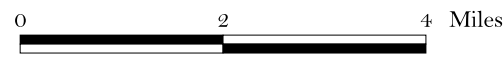
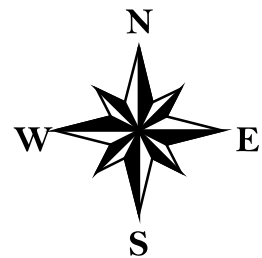
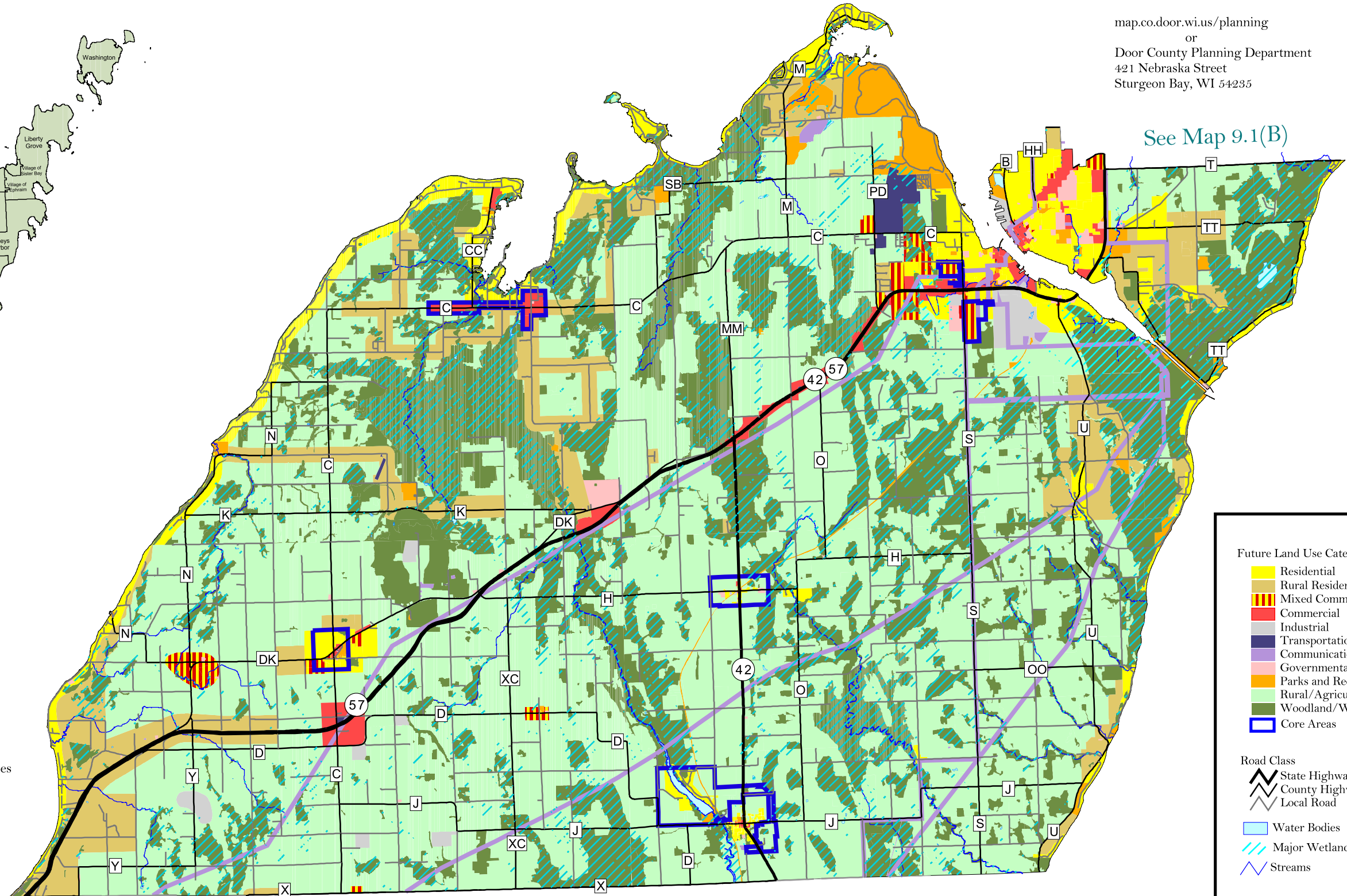
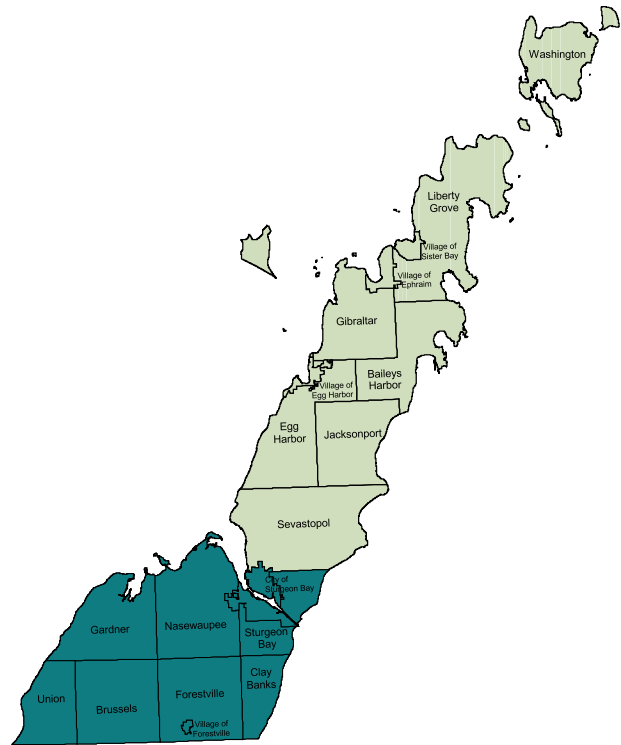
This set of maps is a compilation of data gathered for evaluation purposes only.

Adopted by the Door County Board of Supervisors,
December 16, 2014
Effective upon distribution per Wisconsin State Statutes,
January 1, 2015

NOTE: Larger-scale land use maps, including wetlands, may be viewed at:

map.co.door.wi.us/planning
or
Door County Planning Department
421 Nebraska Street
Sturgeon Bay, WI 54235

See Map 9.1(B)



Future Land Use Categories

- Residential
- Rural Residential
- Mixed Commercial/Residential
- Commercial
- Industrial
- Transportation
- Communications/Utilities
- Governmental/Institutional
- Parks and Recreation
- Rural/Agricultural
- Woodland/Wetland/Natural
- Core Areas

Road Class

- State Highway
- County Highway
- Local Road

Water Bodies

Major Wetland Areas

Streams

*Note: In the event land use designations conflict between future land use and farmland preservation maps for the Town of Clay Banks, the farmland preservation map will supersede the future land use map.